



RESEARCH ARTICLE

Population Drinking and Gender Gap in Tuberculosis Mortality in Russia

Razvodovsky YE*

International Academy of Sobriety, Belarus



*Corresponding author: Razvodovsky YE, International Academy of Sobriety, 80 Gorky Street, Grodno 230009, Belarus, Tel: +375-00152-70-18-84, Fax: +375-0152-43-53-41

Abstract

Background: Tuberculosis is one of the leading causes of mortality from infectious diseases in many countries. To date, there has not been a satisfactory explanation for the gender imbalance in the prevalence and mortality from tuberculosis. The gender differences in tuberculosis mortality in Russia are among the highest in the world.

Aims: The aim of this study was to test the hypothesis of a close relationship between alcohol consumption and the gender gap in tuberculosis mortality rate in Russia at the aggregate level.

Methods: The Autoregressive Integrated Moving Average (ARIMA) time series analysis was used to estimate the relationship between population drinking and gender gap in tuberculosis mortality between 1980 and 2015.

Results: The results of analysis also indicate that 61.3% of the gender gap in tuberculosis mortality in Russia could be attributed to harmful drinking.

Conclusions: The results of present study indicate that harmful drinking is the main behavioral driver explaining the cause of high gender differences in the mortality rate from tuberculosis and its dramatic variations in Russia.

Keywords

Alcohol, Gender difference, Tuberculosis, Mortality, Russia, 1980-2015

To date, there has not been a satisfactory explanation for the gender imbalance in the prevalence and mortality from tuberculosis. To explain this phenomenon, several hypotheses were put forward. The physiological hypothesis states that the biological differences between the sexes make males more susceptible to tuberculosis than females [4,5]. The behavioral hypothesis suggests that behavioral factors, such as smoking and alcohol consumption, play a significant role in gender bias in the prevalence and mortality from tuberculosis [6,7].

The link between alcohol and tuberculosis has been demonstrated in numerous studies that report a strong association between binge drinking and the incidence of tuberculosis, as well as worsening of the course of the disease [8]. The link between harmful use of alcohol and mortality from tuberculosis may be associated with biomedical and socio-behavioral mechanisms [9].

In addition to the role of alcohol in the onset of tuberculosis, there is also strong evidence of the negative impact of heavy drinking on the clinical course of tuberculosis. Alcohol dependent individuals show higher relapse rates, a higher likelihood of adverse clinical course (multidrug-resistance) and interruptions of treatment, which leads to a lack of overall treatment effectiveness [10]. It is also obvious, that alcohol abuse leads to social downward drift, social exclusion and marginalization, which can cause to exposure to tuberculosis infection in overcrowded places, including prisons [9].

Russia has 11 of the heaviest burdens of tuberculosis in the world and the third largest burden of multi-drug resistant tuberculosis [11]. The higher mortality rate

Introduction

Tuberculosis is one of the leading causes of mortality from infectious diseases in many countries [1]. In most countries, men affected more than women, with a ratio of male to female prevalence of 1.9 [2]. The probability of mortality from tuberculosis among men is more than two times higher than among women [3].



Citation: Razvodovsky YE (2019) Population Drinking and Gender Gap in Tuberculosis Mortality in Russia. Int Arch Subst Abuse Rehabil 1:003.

Accepted: May 23, 2019; **Published:** May 25, 2019

Copyright: © 2019 Razvodovsky YE. This is an open-access article distributed under the terms of the Creative Commons Attribution License, which permits unrestricted use, distribution, and reproduction in any medium, provided the original author and source are credited.

from tuberculosis in Russia is explained by the sharp increase in multi-drug resistance, deterioration in the work of anti-tuberculosis services and an increase in binge drinking [12]. There is convincing evidence that alcohol is responsible for the high mortality rate from tuberculosis in Russia. For example, in St. Petersburg, over half of tuberculosis patients were heavy drinkers [13].

The gender differences in tuberculosis mortality in Russia are among the highest in the world [14]. The aim of this study was to test the hypothesis of a close relationship between alcohol consumption and the gender gap in tuberculosis mortality rate in Russia at the aggregate level.

Material and Methods

Data

Data on sex-specific tuberculosis mortality rates (per 1000.000 of the population) from 1980 to 2015 were taken from the Russian State Statistical Committee (Rosstat). The level of alcohol consumption (in litres per capita) in Russia has been estimated using the indirect method [15].

Statistical analysis

The Autoregressive Integrated Moving Average (ARIMA) time series analysis was used to estimate the relationship between population drinking and gender gap in tuberculosis mortality between 1980 and 2015. This method is most commonly used to reduce the risk of false correlation between the time trends [16]. The first

order difference of time series was used to remove time trends. A time series analysis was performed using the statistical package "Statistica 12. StatSoft".

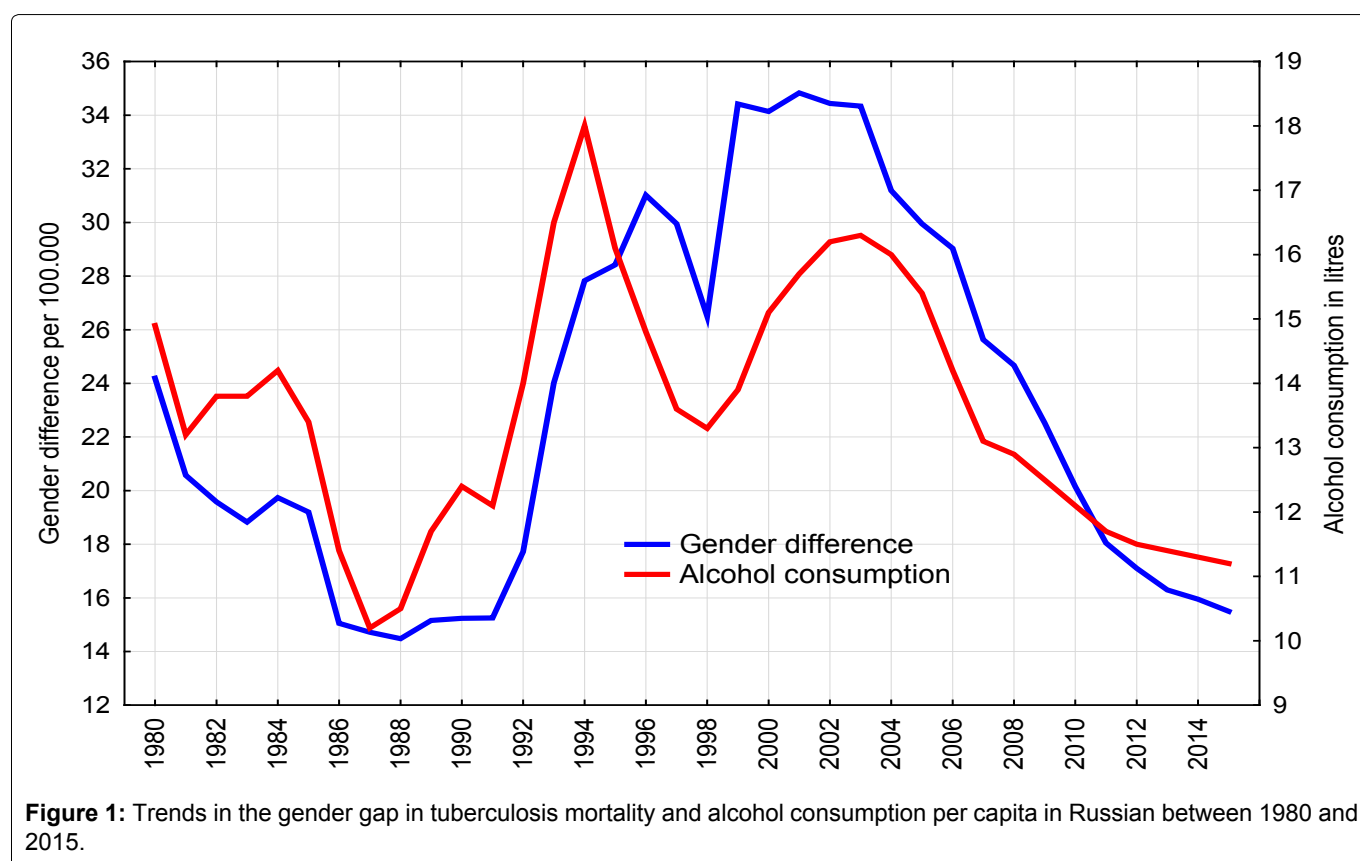
Results

Figure 1 illustrates both the direction and magnitude of changes in population drinking and gender gap in tuberculosis mortality during the study period. As can be seen, the gender difference in tuberculosis mortality has begun to decline since 1980s. In the first half of the 1990s, the overall increase in tuberculosis mortality was accompanied by an increase in gender differences in tuberculosis mortality. In the period from 1994 to 1998, there was a decrease in the gender gap before it rose again from 1998 to 2004, and then began to shrink (Figure 1). Graphical evidence also suggests that the temporal pattern of gender gap in tuberculosis mortality is closely related to changes in per capita alcohol consumption.

The outcomes of time series analysis suggest a statistically significant link between population drinking and the gender gap in tuberculosis mortality rate in Russia: a 1-litre increase in alcohol consumption per capita is associated with an increase in the difference between male and female tuberculosis mortality rates by 7.0%. The results of analysis also indicate that 61.3% of the gender gap in tuberculosis mortality in Russia could be attributed to harmful drinking.

Discussion

It is clear that different patterns in health-related behavior between men and women constitute a signifi-



cant proportion of the gender difference in tuberculosis mortality in the Russian Federation. In particular, unhealthy behavior such as harmful drinking is much more prevalent among Russian men than among women, and thus contributes to their vulnerability. The outcomes of the analysis, which suggest a positive effect of per capita alcohol consumption on gender gap in tuberculosis mortality rate, indicate that harmful drinking plays an important role in explaining the gender gap in tuberculosis mortality in Russia. Empirical evidence also indicates that harmful drinking is a major driver in male excess mortality from tuberculosis in Russia.

It is obvious that the reduction in the gender gap in tuberculosis mortality in the 1980s is largely due to the anti-alcohol campaign of Gorbachev. It also might be the case that alcohol is a key factor in explaining the increasing gender gap in tuberculosis mortality in the 1990s. The dramatic grows of alcohol consumption during this period was largely due to increase in the availability and affordability of alcohol after the repealing of the state alcohol monopoly in January 1992 [17]. Compelling evidence also suggests that the strong downward trend in alcohol consumption in Russia could be a major contributor in the recent convergence of tuberculosis mortality among males and females [18].

Here, several potential limitations of this study should be addressed. It might be the case that other factors could also contribute to the gender difference in tuberculosis mortality in Russia. It is plausible that socio-structural factors contributed to an increase in the gender differences in tuberculosis mortality in the 1990s. There is evidence that harmful drinking as a strategy for dealing with psychosocial stress had a detrimental effect on men's health in Russia in this period [19,20]. It is a well-documented fact that Russian men rely heavily on alcohol to cope with stress as a result of the lack of healthier alternative resources for reference [21]. Thus, psychosocial distress, combined with the high availability of alcohol, is believed to be the main contributor to the disadvantage in male tuberculosis mortality in the 1990s.

Other confounding variables, such as smoking, can also affect the gender gap in tuberculosis mortality. Smoking is widely recognized as an important avoidable risk factor for tuberculosis mortality [22]. Research evidence from ecological studies indicates that smoking might explain 33% of the variance in the gender gap in tuberculosis notifications [23]. However, taking into account the fact that smoking has a long-term effect on tuberculosis mortality, this factor alone cannot explain the dynamic of gender gap in tuberculosis mortality in Russian during the past decades.

Finally, we relied on estimated total level of population drinking across the period. However, the accuracy of estimates of actual alcohol consumption level using indirect methods depends significantly on whether the

alcohol drinking is the only factor affecting the index chosen as the indicator of alcohol-related outcomes. This is a potential drawback of such methods, because many confounding variables influence the level of alcohol-related outcomes [19].

In conclusion, the results of present study indicate that harmful drinking is the main behavioral driver explaining the cause of high gender differences in the mortality rate from tuberculosis and its dramatic variations in Russia. These findings have important implication for alcohol policy in Russia, suggesting that tuberculosis prevention programs should focus more on solving the problem of alcohol availability.

References

1. Bhutta ZA, Sommerfeld J, Lassi ZS, Salam RA, Das JK (2014) Global burden, distribution, and interventions for infectious diseases of poverty. *Infect Dis Poverty* 3: 21.
2. Rhines AS (2013) The role of sex differences in the prevalence and transmission of tuberculosis. *Tuberculosis (Edinb)* 93: 104-107.
3. Neyrolles O, Quintana-Murci L (2009) Sexual inequality in tuberculosis. *PLoS Med* 6: e1000199.
4. Uplekar MW, Rangan S, Weiss MG, Ogden J, Borgdorff MW, et al. (2001) Attention to gender issues in tuberculosis control. *Int J Tuberc Lung Dis* 5: 220-224.
5. Uplekar M, Rangan S, Gyden J (1999) Gender and tuberculosis control: Towards a strategy for research and action. Geneva: WHO.
6. Hudelson P (1996) Gender differentials in tuberculosis: the role of socio-economic and cultural factors. *Tuber Lung Dis* 77: 391-400.
7. Borgdorff MW, Nagelkerke NJ, Dye C, Nunn P (2000) Gender and tuberculosis: a comparison of prevalence surveys with notification data to explore sex differences in case detection. *Int J Tuberc Lung Dis* 4: 123-132.
8. Lönnroth K, Williams BG, Stadlin S, Jaramillo E, Dye C (2008) Alcohol use as a risk factor for tuberculosis - a systematic review. *BMC Public Health* 8: 289.
9. Rehm J, Samokhvalov AV, Neuman MG, Room R, Parry C, et al. (2009) The association between alcohol use, alcohol use disorders and tuberculosis (TB). A systematic review. *BMC Public Health* 9: 450.
10. Rudoy NM (1997) Tuberculosis and alcoholism. *Semin Respir Crit Care Med* 18: 503-508.
11. Migliori GB, Centis R, Lange C, Richardson MD, Sotgiu G (2010) Emerging epidemic of drug-resistant tuberculosis in Europe, Russia, China, South America and Asia: current status and global perspectives. *Curr Opin Pulm Med* 16: 171-179.
12. Razvodovsky YE (2015) Fraction of tuberculosis mortality attributable to alcohol in Russia. *Alcoholism and Drug Dependence* 3: 2-4.
13. Krupitsky EM, Zvartau EE, Lioznov DA, Tsoy MV, Egorova VY, et al. (2006) Co-morbidity of infectious and addictive diseases in St. Petersburg and the Leningrad Region, Russia. *Eur Addict Res* 12: 12-19.
14. Razvodovsky YE (2004) Alcohol sales and mortality due to pulmonary tuberculosis: relationships at a population level. *Probl Tuberk Bolezn Legk* 5: 53-55.

-
15. Nemtsov AV, Shelygin KV (2015) Alcohol consumption in Russia: 1956-2013. *The Questions of Narcology* 5: 28-32.
 16. Box GEP, Jenkins GM (1976) *Time Series Analysis: forecasting and control*. London. Holden-Day Inc.
 17. Nemtsov AV, Razvodovsky YE (2017) The estimation of the level of alcohol consumption in Russia: a review of the literature. *Sobriology* 1: 78-88.
 18. Nemtsov AV, Razvodovsky YE (2016) Russian Alcohol Policy in False Mirror. *Alcohol Alcohol* 51: 626-627.
 19. Moskalewicz J, Razvodovsky YE, Wieczorek P (2016) East-West disparities in alcohol-related harm. *Alcoholism and Drug Addiction* 29: 209-222.
 20. Gavrilova NS, Semyonova VG, Evdokushkina GN, Gavrilov LA (2000) The response of violent mortality to economic crisis in Russia. *Population Research and Policy Review* 19: 397-419.
 21. Yukkala T, Makinen IH, Kislitsyna O, Ferlander S, Vägerö D (2008) Economic strain, social relations, gender, and binge drinking in Moscow. *Soc Sci Med* 66: 663-674.
 22. Kolappan C, Gopi PG (2002) Tobacco smoking and pulmonary tuberculosis. *Thorax* 57: 964-966.
 23. Watkins RE, Plant AJ (2006) Does smoking explain sex differences in the global tuberculosis epidemic? *Epidemiol Infect* 134: 333-339.