



## IMAGE ARTICLE

# Atrial Septal Aneurysm Associated with Mitral Valve Prolapse Syndrome

Satyajit Singh, MBBS, MD, DM\* , Chandraprakash Thakur, MBBS, MD, , Muneshwar Kumar, MBBS, MD , Manish Jain, MBBS, MD  and Vishal Agrawal, MBBS, DNB 



Department of Cardiology, All India Institute of Medical Sciences (AIIMS), Raipur, India

\*Corresponding author: Dr. Satyajit Singh, MBBS, MD, DM, Assistant Professor, Department of Cardiology, All India Institute of Medical Sciences (AIIMS), Raipur 492099, India, Tel: +91-7008430223

### Keywords

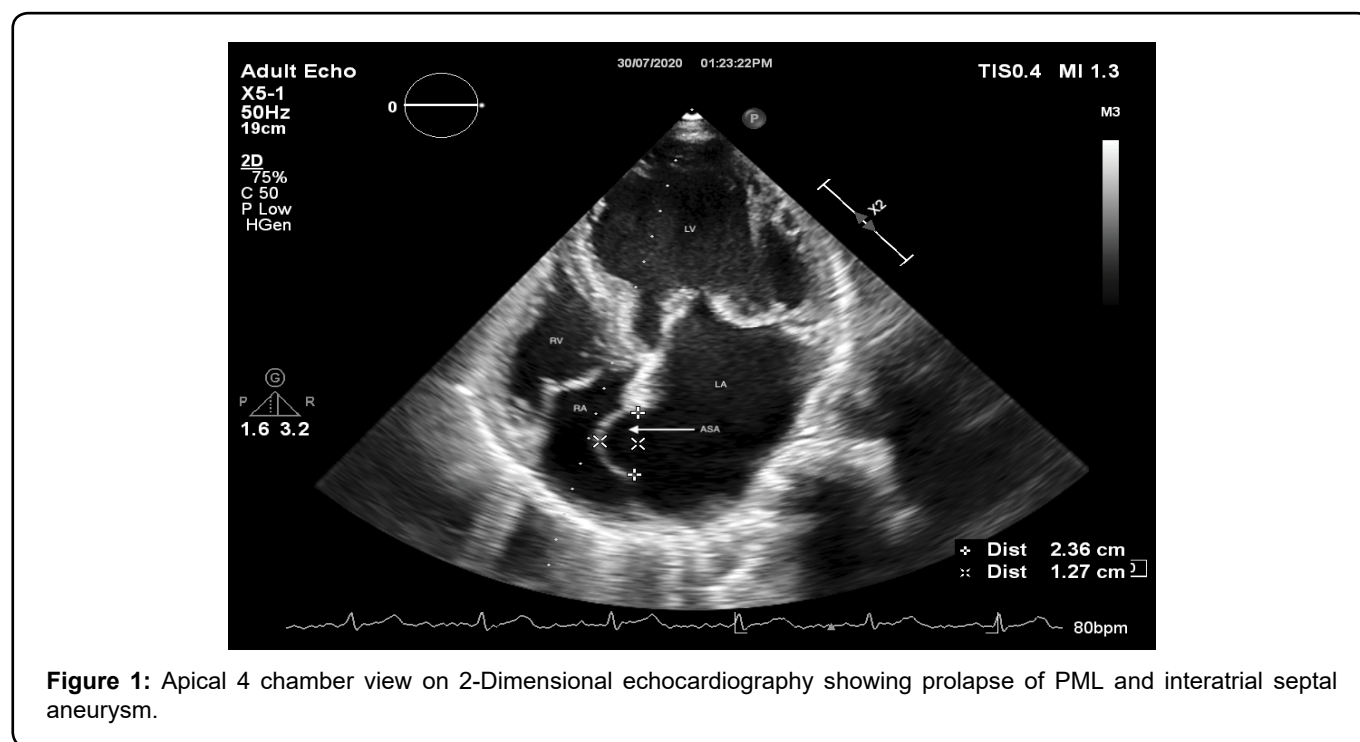
Atrial septal aneurysm, Mitral Valve Prolapse Syndrome, Echocardiography, Real Time-3D-Echocardiography

### Manuscript

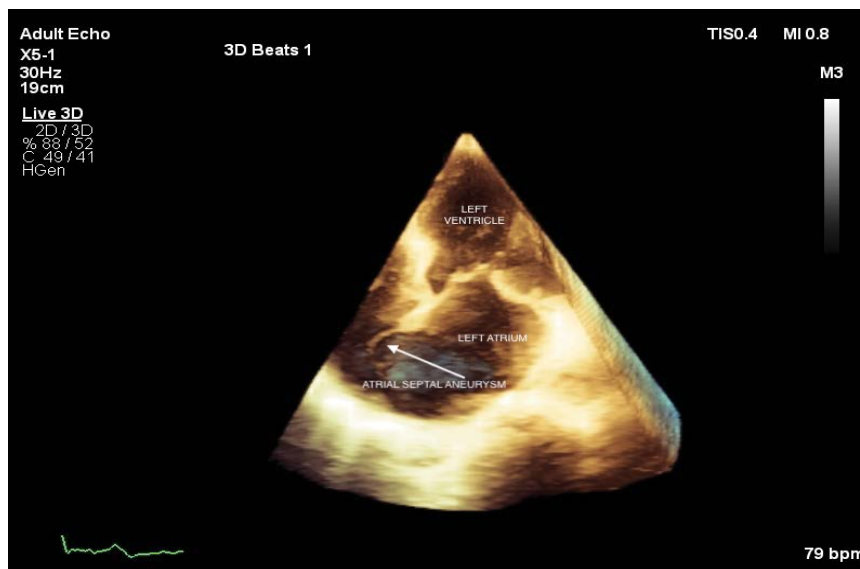
A 68-year-old male presented to the out-patient clinic with history of intermittent palpitations and fatigability for past seven months. On cardiovascular system examination, mid-systolic click and pan-systolic

murmur grade III/VI were audible at the apex with radiation to the base of heart. Echocardiographic study revealed atrial septal aneurysm (Figure 1, Figure 2, Video 1 and Video 2), along with prolapse of Posterior Mitral Leaflet (PML) into left atrium (Figure 3 and Figure 4). Color-doppler echocardiography revealed severe eccentric mitral regurgitation (MR) jet impinging on atrial septal aneurysm with vena-contracta width of 10.9 mm (Figure 4 and Video 3).

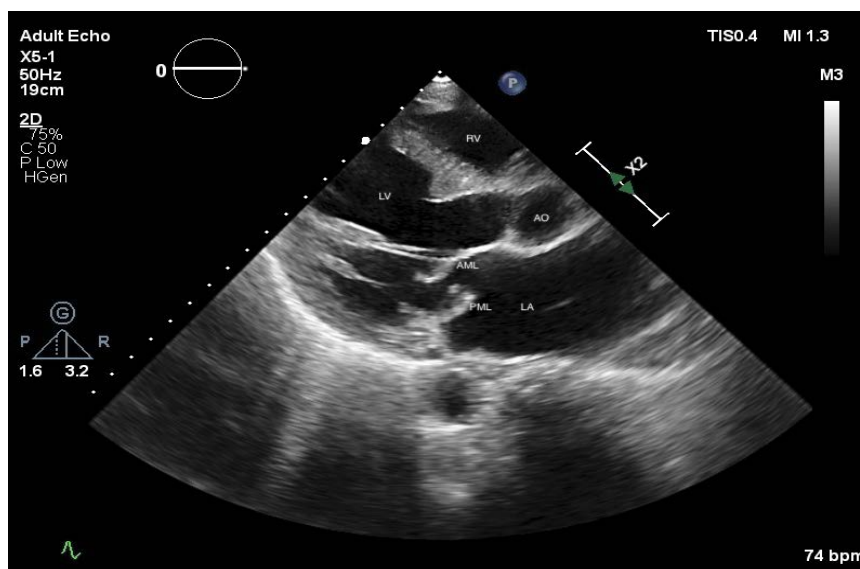
Atrial Septal Aneurysm (ASA) is a congenital defor-



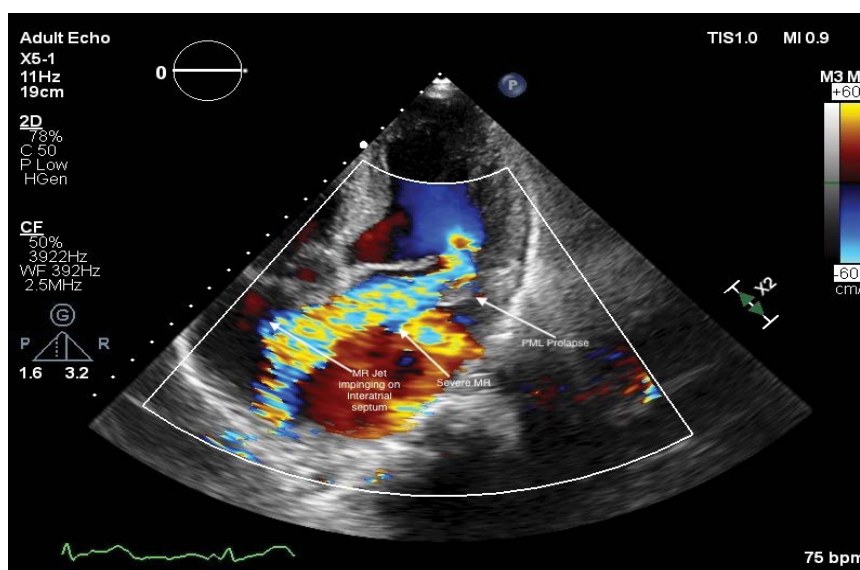
**Figure 1:** Apical 4 chamber view on 2-Dimensional echocardiography showing prolapse of PML and interatrial septal aneurysm.



**Figure 2:** 3D-Echocardiographic image showing atrial septal aneurysm in apical 4 chamber view.



**Figure 3:** Parasternal Long Axis (PLAX) view on 2D-echocardiography showing prolapse of PML.



**Figure 4:** 2D-Echocardiography with color doppler depicting severe eccentric MR jet directed along PML and jet impinging on interatrial septum near atrial septal aneurysm.

mity of the inter-atrial septum with a prevalence of 1-2% in the adult population. It is usually associated with Patent Foramen Ovale (PFO), Atrial Septal Defect (ASD), Mitral Valve Prolapse Syndrome (MVPS), TVPS, Marfan's syndrome and aortic dissection.

### Financial Disclosure

None.

### Conflicts of Interest

None.

### Statement of Equal Authors' Contribution

All authors contributed equally to the scientific content, designing and writing of this manuscript.