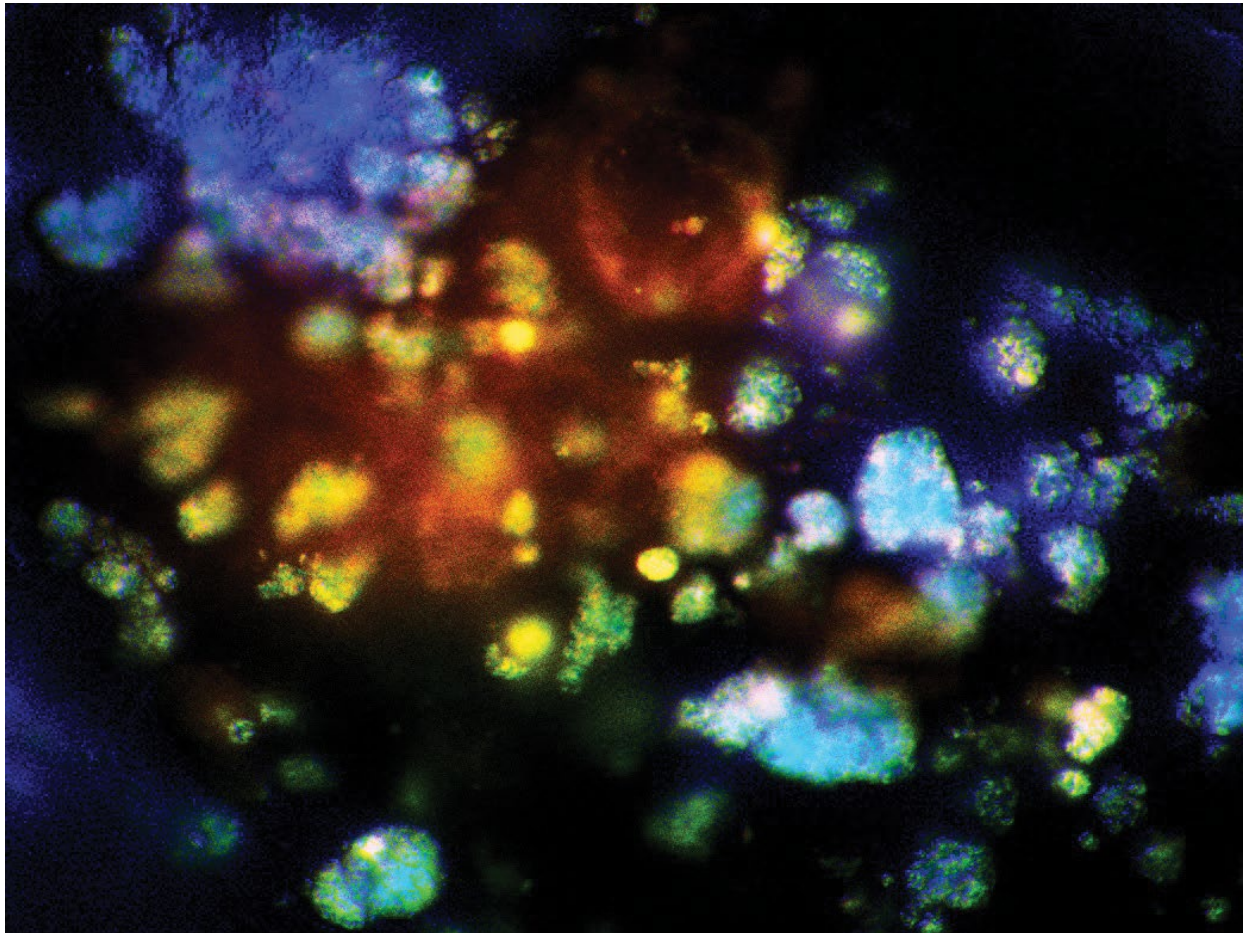




Image 1:006

Geographic Atrophy: Ex Vivo Hyperspectral Autofluorescence (AF) Image of an Eye with Geographic Atrophy from 81-Year-Old Male Donor



The image is an overlay of 3 images representing the distribution of the 3 most abundant fluorophore signals that were extracted using advanced factorization algorithms. The 3 images were digitally colored red (1), green (2) and blue (3). Localization of the signals into different structures is illustrated by color mixing: Remaining RPE cells (light blue), Granule aggregates shed from dying RPE cells (yellow), Basal Lamellar Deposits (orange). This method demonstrates that distinct fluorophore signals identify distinct pathological structures in AMD.

Information

R. Theodore Smith*, Tal Ben-Ami and Yue-hong Tong

New York University, Department of Ophthalmology, New York, USA

***Correspondence:** R. Theodore Smith, New York University, Department of Ophthalmology, 550 First Avenue, New York, NY 10016, USA, Tel: 212-263-7300; E-mail: tbenami@gmail.com

Citation: Smith RT, Ben-Ami T, Tong Y (2015) Geographic Atrophy: Ex Vivo Hyperspectral Autofluorescence (AF) Image of an Eye with Geographic Atrophy from 81-Year-Old Male Donor. Clin Med Img Lib 1:006

Published: August 25, 2015

Copyright: © 2015 Smith RT. This is an open-access content distributed under the terms of the Creative Commons Attribution License, which permits unrestricted use, distribution, and reproduction in any medium, provided the original author and source are credited.